

# CET-A08F2 (PTF-08A)



## Main Feature:

1. Socket with screw terminal.
2. Easy replacement of relays on a densely packed DIN rail.
3. Metal clip with ejection function for relays of 35mm height.
4. Socket can be used as connector for diagnosis function.
5. Sockets and accessories: RoHS compliance (Directive 2002/95/EC).

Socket with screw-type terminal for DIN-rail mounting

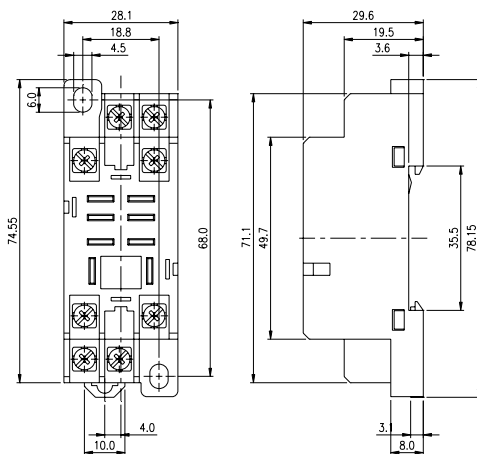
## Approvals:



## Technical data:

Rated current	10A
Rated voltage / max. Switching voltage AC	150/250 VAC
Dielectric strength coil-contact circuit	2,000 V <sub>rms</sub>
Insulation resistance (at 500VDC)	1,000 MΩ min.
Material group of insulation parts	≥ IIIa
Insulation to IEC 60664-1	
Type of insulation coil-contact circuit	basic
Open contact circuit	functional
Rated insulation voltage	250V
Pollution degree	2
Rated voltage system	230/400V
Over voltage category	III
RoHS Directive 2002/95/EC	
Sockets, retainers and marking tag:	compliant
Degree of protection DIN 40050	IP20
Ambient temperature range	-25...+55°C
Terminals	screw
Terminal screw torque acc. IEC 61984	0.5Nm
Max.	0.7Nm
Wire cross section	
Single wire	2x2.5mm <sup>2</sup>
Fine wire	2x2.5mm <sup>2</sup>
With bootlace crimp (DIN 46228/1)	2x1.5mm <sup>2</sup>
Insertion cycles	A (10)
Max. Insertion Force total	80N
Mounting distance	0, dense packing
Weight	53g
Packaging unit	10 pcs.

## Dimension:



## Terminal illustration:

